

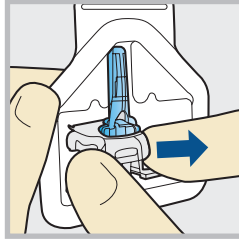
INSERTING A NEW SENSOR

Wash your hands and clean insertion site with alcohol.

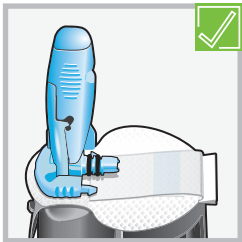
1) Open sensor package. Pull corner of paper covering to open sensor package.



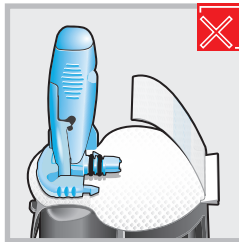
2a) Hold sensor by plastic pedestal. Remove sensor with attached pedestal by holding pedestal only. Place sensor/pedestal on a clean, flat surface (such as a table).



2b) Tuck adhesive tab. Make sure that sensor's adhesive tab is tucked under sensor connector and snaps.

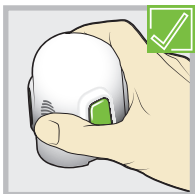


Correct

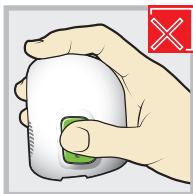


Incorrect

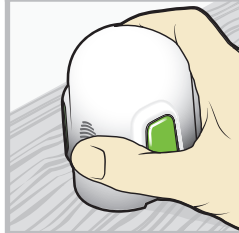
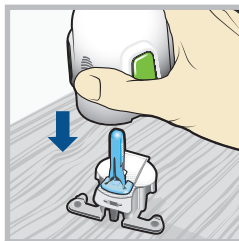
3) Load sensor into serter. Grip serter exactly as shown **with thumb on thumb print on serter.** Do not hold the side buttons. Push serter down onto pedestal until base of serter sits flat on table.



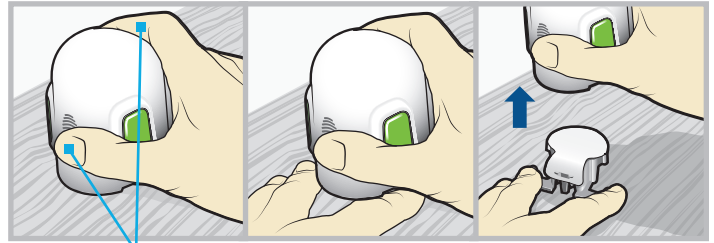
Correct



Incorrect



4) Detach serter from pedestal. To detach serter from the pedestal, grip serter as shown with thumb on thumb print on serter. With other hand, place two fingers on pedestal arms, and slowly pull serter straight up.



Fingers are NOT holding the side buttons.

NOTE: Make sure that the pedestal is firmly on the table before pulling the serter away.



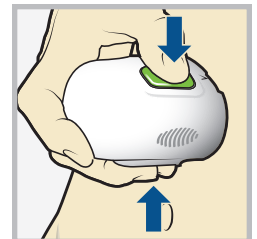
CAUTION: Do not detach pedestal from serter in mid-air as this may damage the sensor.

5a) Place serter on body. Hold serter steadily against your cleaned insertion site, without pushing serter too deeply into skin.



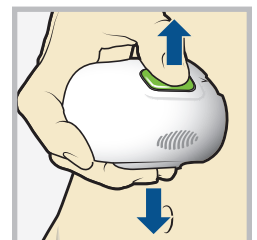
NOTE: Failing to hold serter securely flat against body may allow serter to spring back after pressing buttons and result in improper insertion of sensor.

5b) Insert sensor. Press and release **bump** on both buttons at same time.



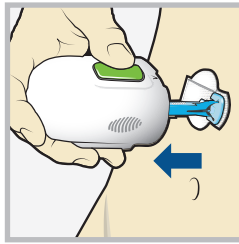
5c) Hold serter against body.

Continue holding serter against body for at least five seconds to allow adhesive to stick to skin.

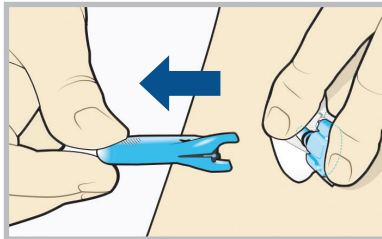
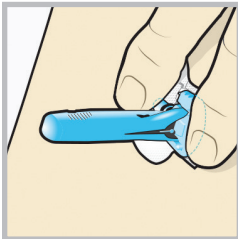


5d) Remove sserter from body.

Slowly pull sserter away from skin, making sure buttons are not pressed.



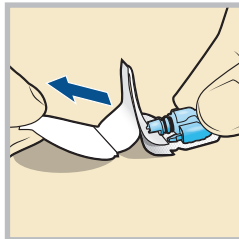
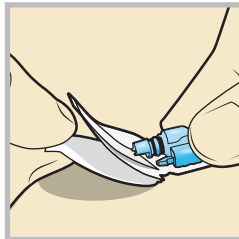
6) Remove needle housing. Gently hold base of sensor against skin with one hand. With other hand, hold needle housing **at top** and slowly pull it straight away from sensor. Dispose of needle housing in sharps container.



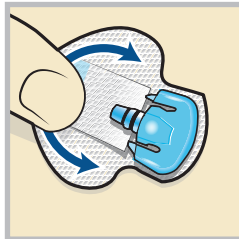
NOTE: Apply additional liquid adhesive. You may use an optional adhesive such as Skin Tac™ under the adhesive pad, prior to removing the liner. Allow it to dry.

7a) Remove adhesive pad liner.

Hold sensor in place and gently remove adhesive liner from under adhesive pad.



7b) Press entire adhesive pad to skin. Firmly press adhesive against skin and smooth entire adhesive pad so it sticks to skin.



NOTE: The Guardian sensor adhesive is sensitive to pressure. Continue applying pressure on the adhesive to ensure that the sensor remains inserted in the skin for 7 days of wear.

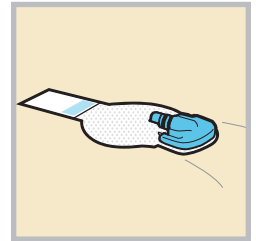
8a) Untuck adhesive tab.

Untuck adhesive tab from under sensor connector.



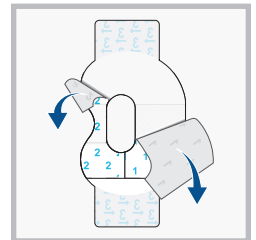
8b) Straighten adhesive tab.

Straighten adhesive tab so it lies flat against your skin, but do not remove adhesive liner yet.



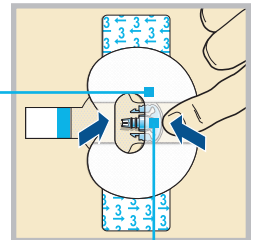
TAPING YOUR SENSOR

1) Remove liner 1 and liner 2.



2) Apply tape as shown and press down firmly.

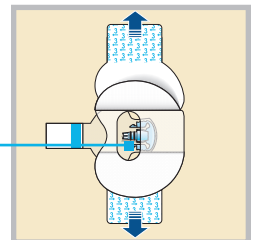
Both sensor and skin are taped.



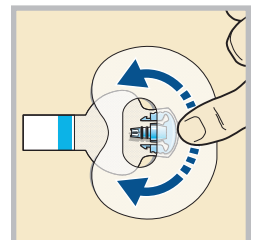
Wide part of tape covers half of sensor base.

3) Remove liner 3 from each side.

Connector and snaps in hole of tape.

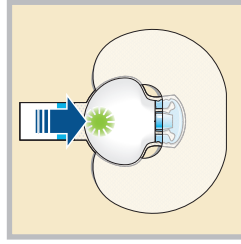


4) Smooth the tape.



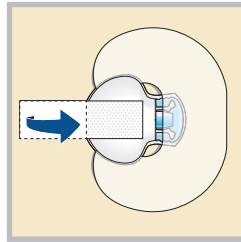
CONNECTING YOUR TRANSMITTER

- 1) Connect the transmitter to the sensor.



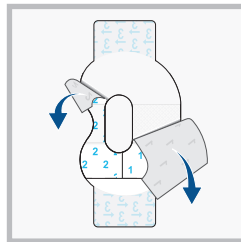
NOTE: Wait for green light on transmitter to flash. If green light does not flash, refer to Troubleshooting section of your transmitter user guide.

- 2) Remove liner from adhesive tab. Cover transmitter with adhesive tab.



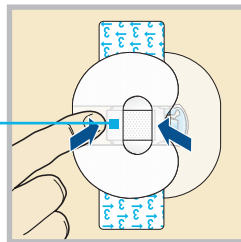
NOTE: Do not pull tab too tightly.

- 3) To apply 2nd tape, remove liner 1 and liner 2.

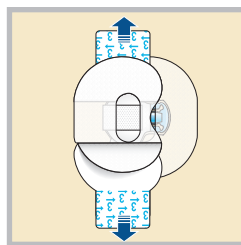


- 4) Rotate 2nd tape and place tape over transmitter. Press down firmly.

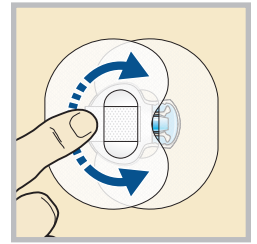
Wide part of tape covers end of transmitter and skin.



- 5) Remove liner 3 from each side.

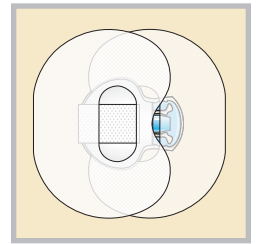


- 6) Smooth the tape.



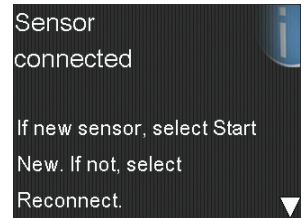
NOTE: Check your site regularly. Apply additional off-the-shelf tape if sensor and transmitter not secure.

- 7) This image is an example of Oval Tape applied correctly.

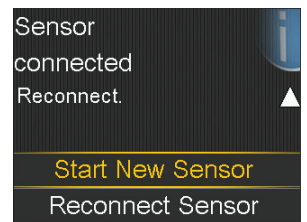


STARTING THE SENSOR

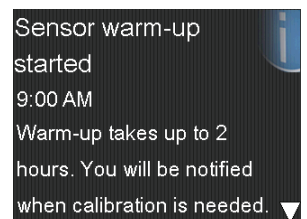
- 1) Once **Sensor connected** message appears, press **✓**. This typically takes less than a minute, but may take up to 10 minutes.



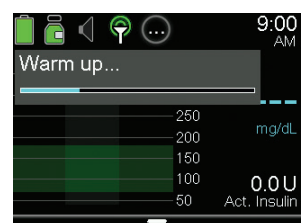
- 2) Select **Start New Sensor**.



- 3) The **Sensor warm-up started** message will appear. Press **✓** and then **○** to clear.

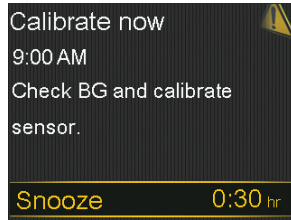


- 4) **Warm up...** will appear on the Home screen until sensor is ready for the first calibration.

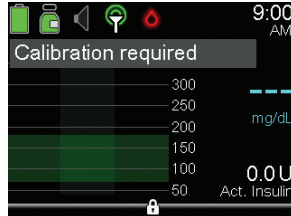


CALIBRATING

- 1) Select **Snooze**.



- 2) Pump will display this screen. Test BG and use to calibrate the sensor. See "Calibration" on page 31 of the *Getting Started with MiniMed 670G Continuous Glucose Monitoring workbook* if you need help calibrating.



- 3) Once calibration BG is entered, this screen will display. You will begin receiving sensor glucose readings in 10 minutes.

