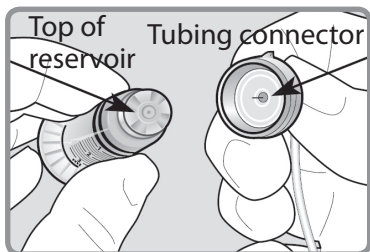
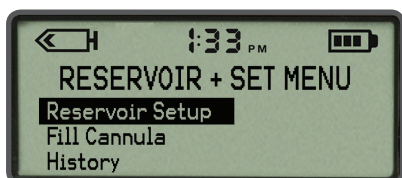


**WARNING:** If insulin, or any liquid, gets inside the tubing connector, it can temporarily block the vents that allow the pump to properly prime the infusion set. This may result in the delivery of too little or too much insulin, which can cause hypoglycemia or hyperglycemia. To prevent insulin from getting inside the mio tubing connector, after you fill the reservoir make sure you hold the insulin vial upright when you remove the reservoir from the transfer guard. If you do not hold the insulin vial upright, insulin can get on the top of the reservoir and could transfer liquid into the tubing connector. For more information, please see “Tubing Connector”, located in the Introduction chapter of the MiniMed 530G System User Guide.



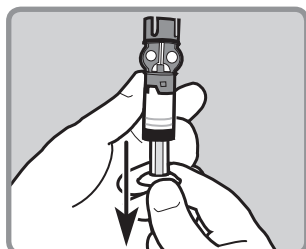
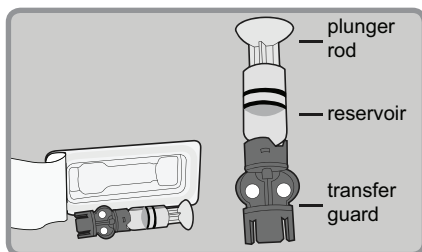
### To Rewind the Piston in the Pump:

1. Wash your hands. Remove the old infusion set from your body and the reservoir from the pump.
2. Select **Reservoir + Set** in the **MAIN MENU**, then select **Reservoir Setup** to open the **REWIND** screen. Press **ACT** to rewind.

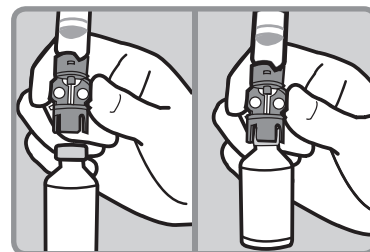


### To Fill the Reservoir:

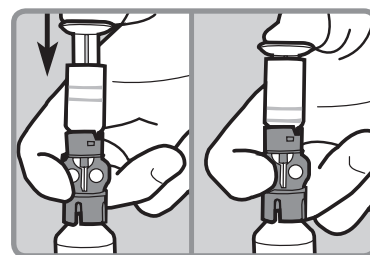
1. Remove the reservoir from the package.
2. Pull the plunger down to fill the reservoir with air.



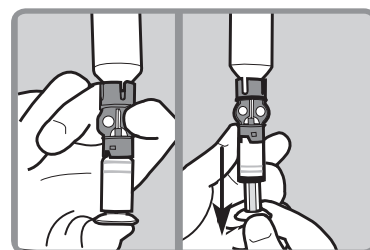
3. Wipe the top of the insulin vial with alcohol. Hold the blue transfer guard and press it down onto the insulin vial.



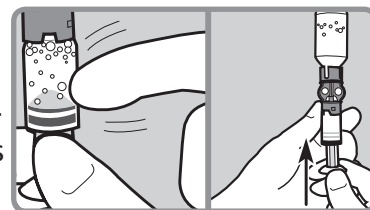
4. Push down on the plunger to push air from the reservoir into the vial. Continue to hold the plunger down.



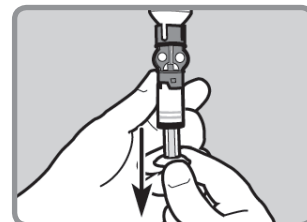
5. Flip the vial over so it is now on top. Slowly pull the plunger down to fill the reservoir.



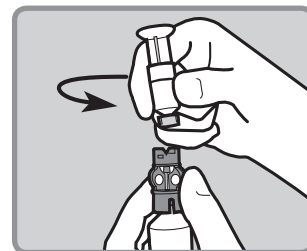
6. Check the reservoir for air bubbles. Tap the side of the reservoir to force any bubbles to rise to the top. Push the plunger up to move the air bubbles from the reservoir into the insulin vial.



7. After the air bubbles are removed, slowly pull the plunger down to fill the reservoir with enough insulin to last 2-3 days.

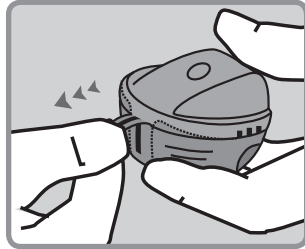


8. To avoid getting insulin on the top of the reservoir, flip the vial over, so the vial is upright. Hold the transfer guard, and turn the reservoir counter-clockwise. Pull the reservoir straight up to disconnect it from the transfer guard. Discard the transfer guard into a sharps container.

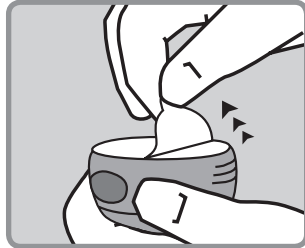


**To Connect the Reservoir to the Tubing:**

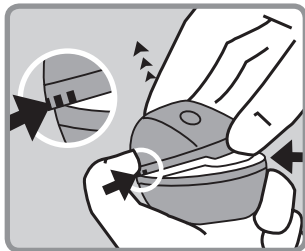
1. Pull down the red plastic tab to remove the clear packaging.



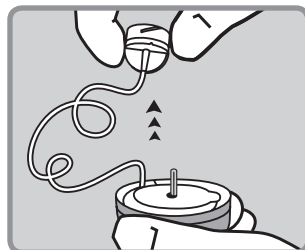
2. Pull the paper tab to remove the sterile paper backing from the bottom of the mio.



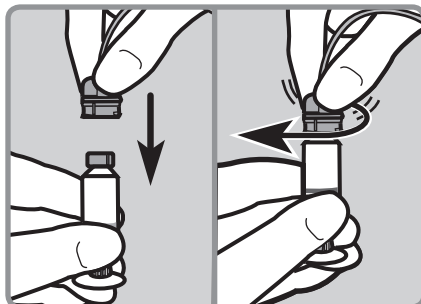
3. Squeeze the three raised markings on both sides of the mio lid. Lift and remove the lid.



4. Free the tubing from the slot that holds it in place. Gently unwind the tubing in a counter clockwise direction.



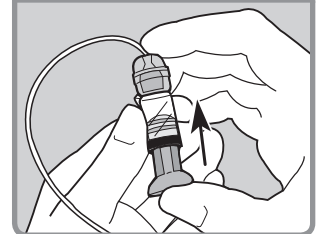
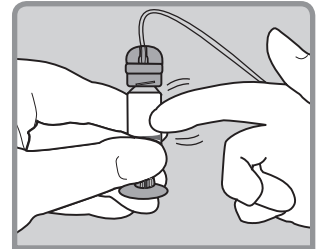
5. Make sure the top of the reservoir is dry. Gently push the tubing connector onto the top of the reservoir and turn it clockwise until it slides and locks into place.



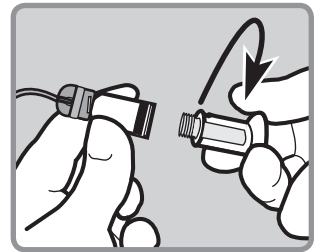
**Note:** If insulin or any other liquid has gotten on the top of the reservoir or inside the tubing connector, discard both and start over with a new reservoir and mio infusion set.

**To Connect the Reservoir to the Tubing:**

6. Tap the side of the reservoir to force any remaining air bubbles to rise to the top. Push up on the plunger until bubbles are out and you see insulin in the tubing.

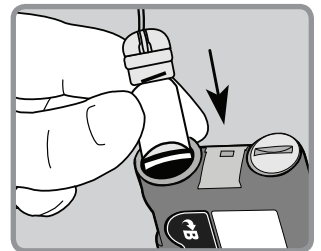
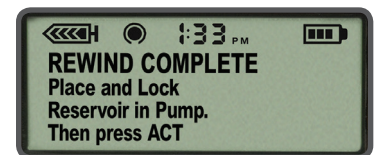


7. Turn the plunger counter-clockwise to unscrew it from the reservoir. Be careful not to pull the plunger before it is disconnected, or insulin will spill out.

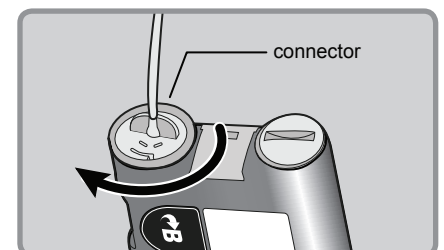


**To Fill the Tubing:**

1. Press **ACT** so that **REWIND COMPLETE** appears. Insert the newly filled reservoir into the reservoir compartment.

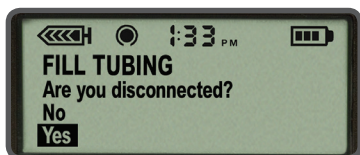


2. Turn the tubing connector clockwise until it locks into place.



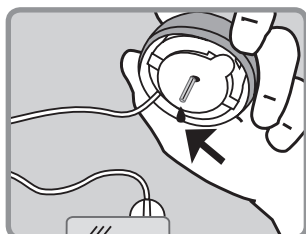
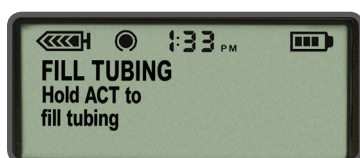
### To Fill the Tubing:

- Press **ACT** to go to the **FILL TUBING** screen. Be sure the infusion set is NOT connected to your body. Then select **Yes** and press **ACT**.

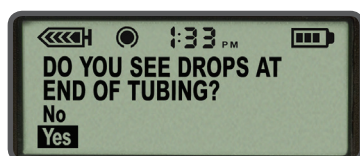


**IMPORTANT:** Never Fill Tubing while you are connected to the pump.

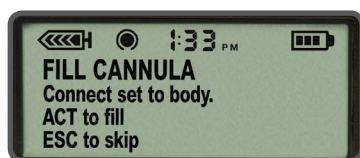
- Press and hold **ACT** to fill the tubing. The pump will beep as the tubing fills. Release **ACT** when you see drops at the end of the mio needle. Then press **ESC**.



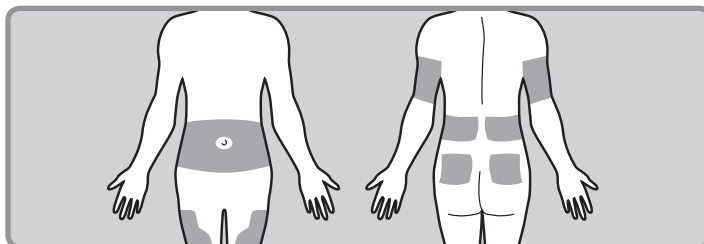
- If you see drops at the end of the mio needle and there are no air bubbles in the tubing, select **Yes** and press **ACT**.



- When the **FILL CANNULA** screen appears, you are ready to insert the mio infusion set.



### Choose Insertion Site:



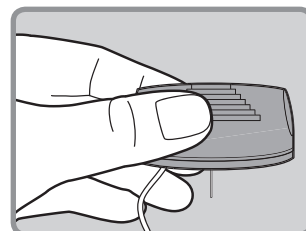
The best areas of the body to insert the infusion set are shown in the shaded areas of this drawing. Follow your healthcare provider's instructions on where to insert your infusion set.

### To Insert the mio™ Infusion Set:

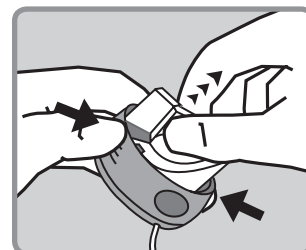
- Clean the selected insertion site with alcohol or other antiseptic wipe.
- Gently peel the paper backing to expose the adhesive.



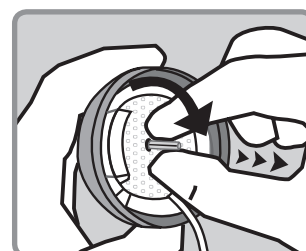
- Turn the mio over and hold it by the lined ridges on the sides.



- With the other hand, pull up on the center handle of the inserter until it clicks and locks into place.

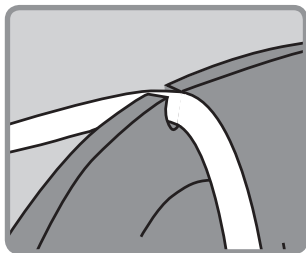


- Carefully hold the needle guard by the tip. Gently turn the needle guard and pull to remove it.



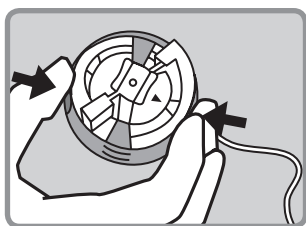
**To Insert the mio™ Infusion Set:**

- Place the tubing in the slot on the side of the inserter.

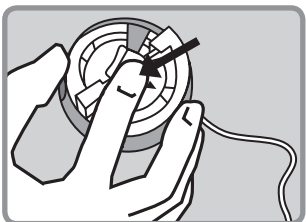


**Note:** Be careful not to pull the tubing tightly when placing it in the slot.

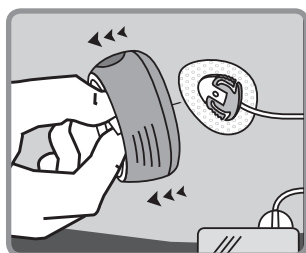
- Place the mio on your prepared site. To insert the mio, press the two round indentations on either side of the inserter.



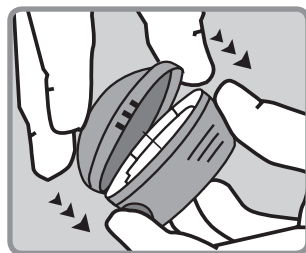
- Push down on the center of the inserter to press the adhesive against your skin.



- To remove the inserter, hold the center handle and gently pull it straight out. Press the adhesive securely against your skin.

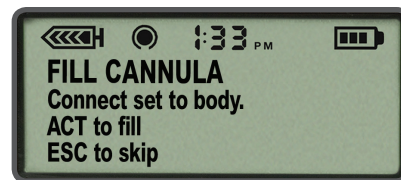


- Place the lid back onto the inserter to safely discard the needle.

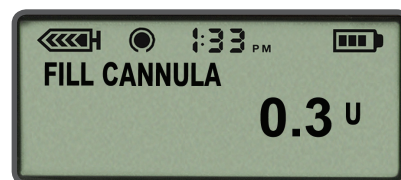


**To Fill the Cannula:**

- If the pump has returned to the **HOME** screen, press **ACT**. On the **FILL CANNULA** screen, press **ACT**.



- If you are using a 6mm cannula, press **^** to enter 0.3 units of insulin. Press **ACT**.



OR

- Or, if you are using a 9mm cannula, press **^** to enter 0.5 units of insulin. Press **ACT**.



**Note:** Fill Cannula is to fill the empty cannula after the insertion needle has been removed. The tubing is already filled.