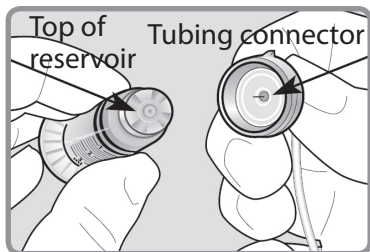


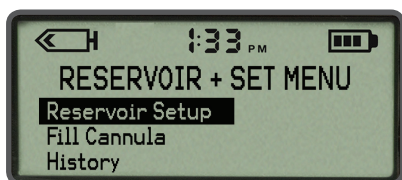
WARNING: If insulin, or any liquid, gets inside the tubing connector, it can temporarily block the vents that allow the pump to properly prime the infusion set. This may result in the delivery of too little or too much insulin, which can cause hypoglycemia or hyperglycemia. To prevent insulin from getting inside the Sure-T tubing connector, after you fill the reservoir make sure you hold the insulin vial upright when you remove the reservoir from the transfer guard. If you do not hold the insulin vial upright, insulin can get on the top of the reservoir and could transfer liquid into the tubing connector. For more information, please see “Tubing Connector”, located in the Introduction chapter of the MiniMed 530G System User Guide.



To Rewind the Piston in the Pump:

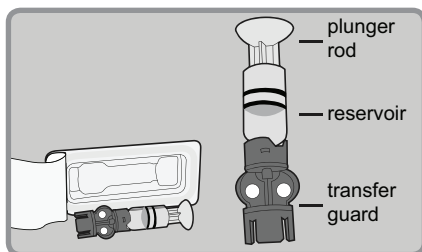
1. Wash your hands. Remove the old infusion set from your body and the reservoir from the pump.

2. Select **Reservoir + Set** in the **MAIN MENU**, then select **Reservoir Setup** to open the **REWIND** screen. Press **ACT** to rewind.

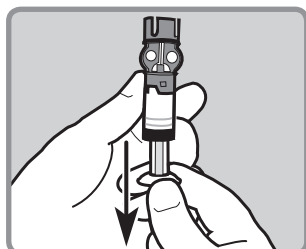


To Fill the Reservoir:

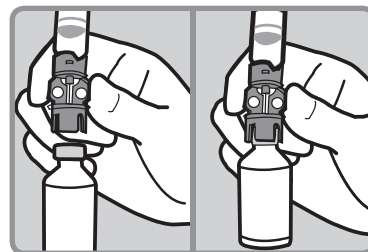
1. Remove the reservoir from the package.



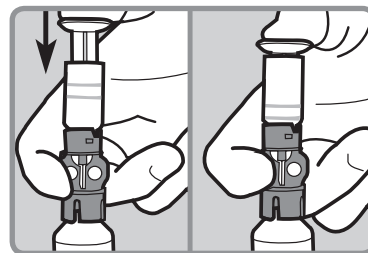
2. Pull the plunger down to fill the reservoir with air.



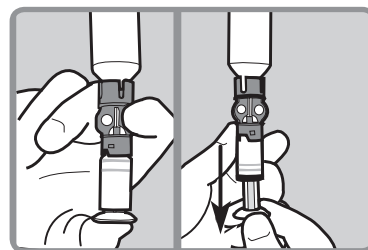
3. Wipe the top of the insulin vial with alcohol. Hold the blue transfer guard and press it down onto the insulin vial.



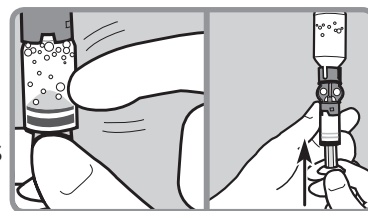
4. Push down on the plunger to push air from the reservoir into the vial. Continue to hold the plunger down.



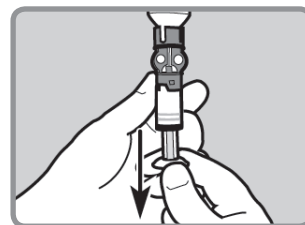
5. Flip the vial over so it is now on top. Slowly pull the plunger down to fill the reservoir.



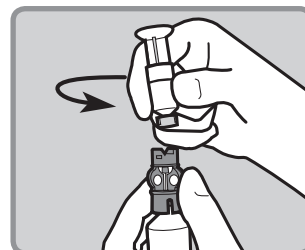
6. Check the reservoir for air bubbles. Tap the side of the reservoir to force any bubbles to rise to the top. Push the plunger up to move the air bubbles from the reservoir into the insulin vial.



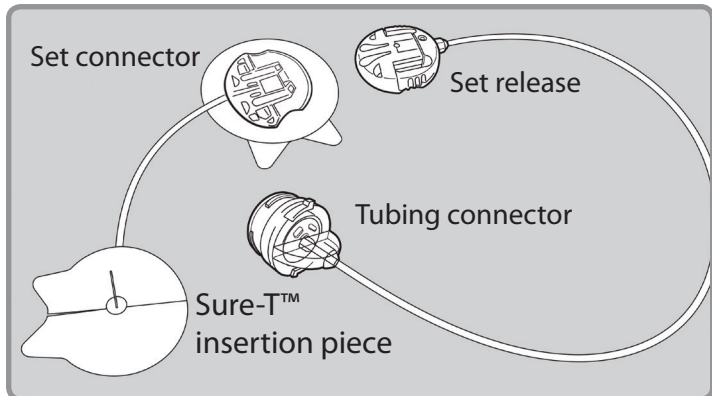
7. After the air bubbles are removed, slowly pull the plunger down to fill the reservoir with enough insulin to last 2 days.



8. To avoid getting insulin on the top of the reservoir, flip the vial over, so the vial is upright. Hold the transfer guard, and turn the reservoir counter-clockwise. Pull the reservoir straight up to disconnect it from the transfer guard. Discard the transfer guard into a sharps container.



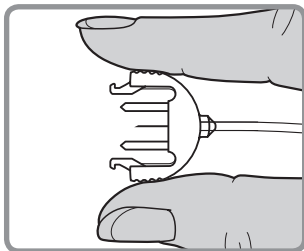
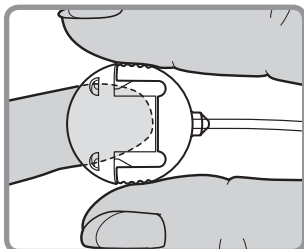
To Connect the Reservoir to the Tubing:



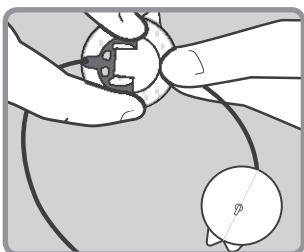
1. Remove the Sure-T from the package.

2. Press the edges of the set release connector.

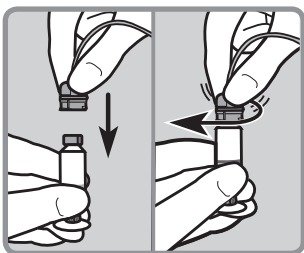
With the other hand, pull the cap off.



3. Slide the set release connector into the set connector.



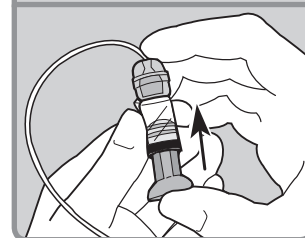
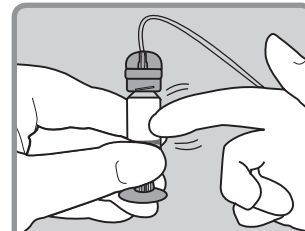
4. Make sure the top of the reservoir is dry. Gently push the tubing connector onto the top of the reservoir and turn it clockwise until it slides and locks into place.



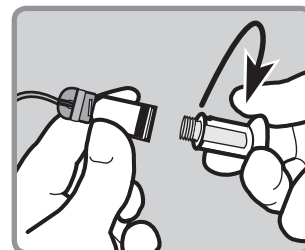
Note: If insulin or any other liquid has gotten on the top of the reservoir or inside the tubing connector, discard both and start over with a new reservoir and Sure-T infusion set.

To Connect the Reservoir to the Tubing:

5. Tap the side of the reservoir to force any remaining air bubbles to rise to the top. Push up on the plunger until the bubbles are out and you see insulin in the tubing.

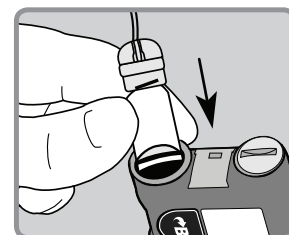
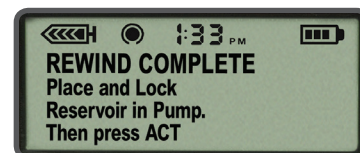


6. Turn the plunger counter-clockwise to unscrew it from the reservoir. Be careful not to pull out the plunger from the reservoir or insulin will spill out.

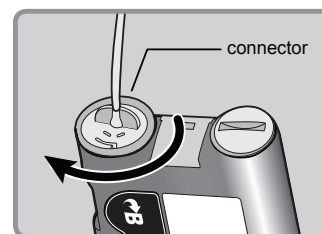


To Fill the Tubing:

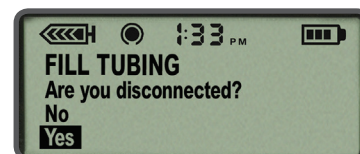
1. Press **ACT** so that **REWIND COMPLETE** appears. Insert the newly filled reservoir into the reservoir compartment.



2. Turn the tubing connector clockwise until it locks into place.



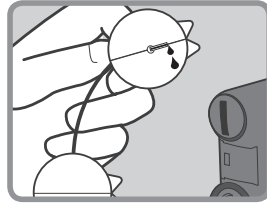
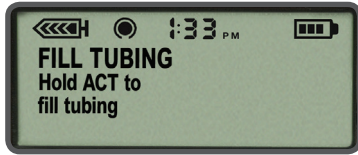
3. Press **ACT** to go to the **FILL TUBING** screen. Be sure the infusion set is **NOT** connected to your body. Then select **Yes** and press **ACT**.



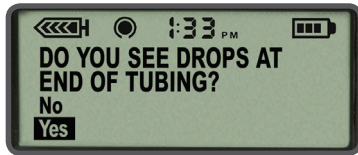
To Fill the Tubing:

IMPORTANT: Never Fill Tubing while you are connected to the pump.

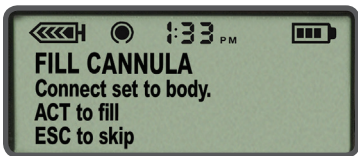
- Press and hold **ACT** to fill the tubing. The pump will beep as the tubing fills. Release **ACT** when you see drops coming out of the Sure-T needle. Then press **ESC**.



- If you see drops at the end of the needle and there are no air bubbles in the tubing, select **Yes** and press **ACT**.

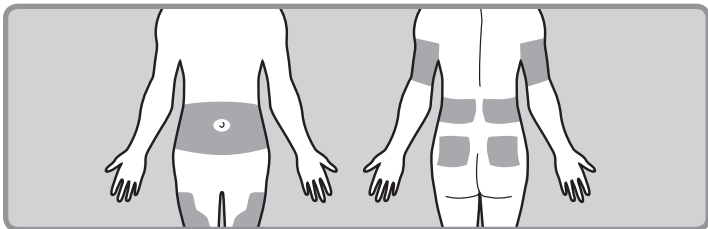


- When the **FILL CANNULA** screen appears, press **ESC**. You are ready to insert the Sure-T infusion set.



IMPORTANT: The Sure-T does not require a fill cannula as the steel cannula was already filled during the fill tubing step.

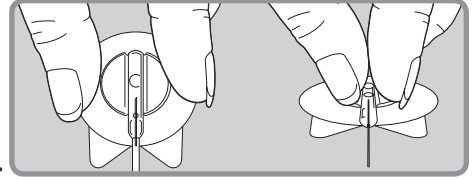
Choose Your Insertion Site:



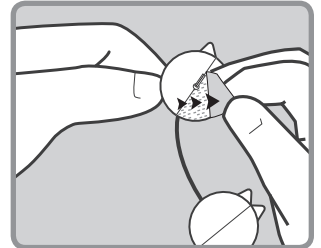
The best areas of the body to insert the infusion set are shown in the shaded areas of this drawing. Follow your healthcare provider's instructions on where to insert your infusion sets.

To Insert the Sure-T™ Infusion Set:

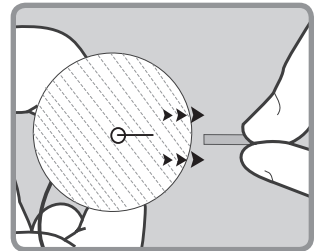
- Clean the selected insertion site with alcohol or other antiseptic wipe.
- Flip the plastic wings of the Sure-T up and press the wings together.



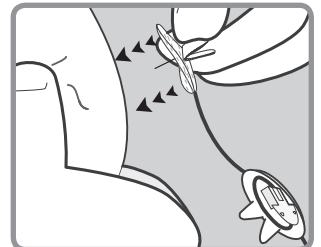
- Peel off both pieces of the paper backing from the Sure-T insertion piece.



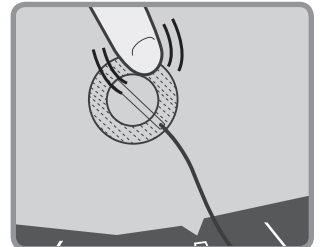
- Pull off the needle guard.



- With one hand, pinch up the skin at the prepared site. With the other hand, insert the Sure-T needle straight in at a 90 degree angle.



- Press the adhesive securely against your skin.



- Remove the paper backing from the the set connector and secure the adhesive to your skin. Be sure to select an area of your body that allows for easy disconnecting from the tubing.

