

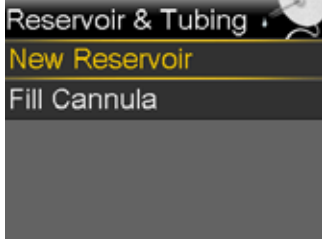
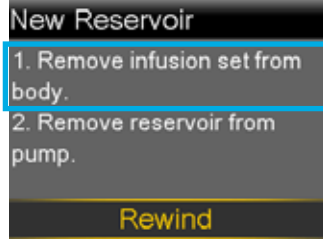


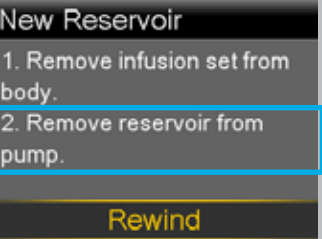
**START HERE**

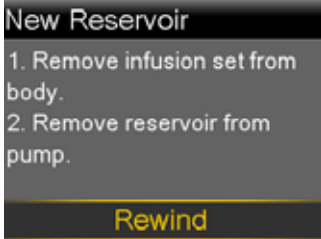
**1**  Wash your hands. Press **O**. Select **Options**.


**2**  Select **Reservoir & Tubing**.

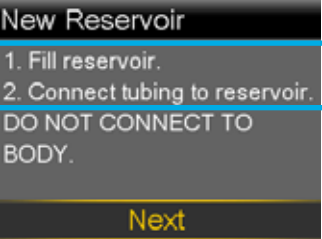
**3**  Select **New Reservoir**.

**4**  Remove the infusion set you have been using by loosening the adhesive and pulling away from body.

**5**  Remove the used reservoir from the pump.

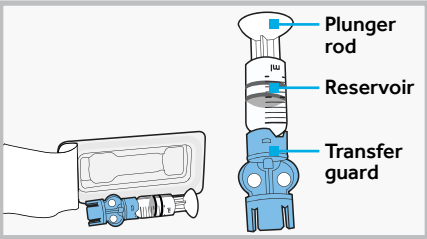
**6**  Select **Rewind**.

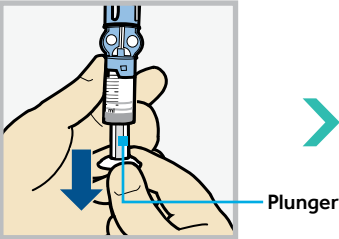
 Please wait...

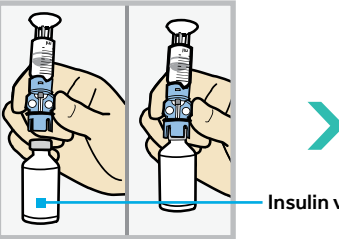
 **Next**

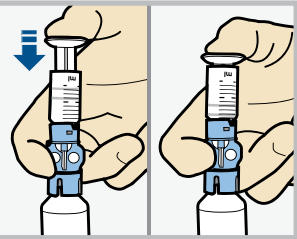
**FILL RESERVOIR & CONNECT TO THE INFUSION SET TUBING**

Follow the next steps to fill reservoir with insulin and connect to the infusion set tubing.

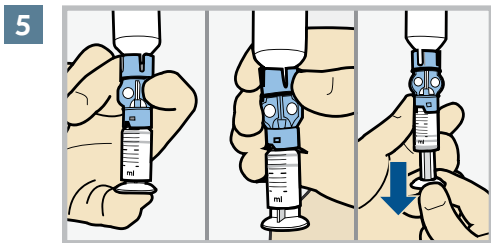
**1**  Remove from package. Make sure insulin vial is at room temperature to reduce the risk of air bubbles.

**2**  Pull plunger down to the amount that you plan to fill with insulin.

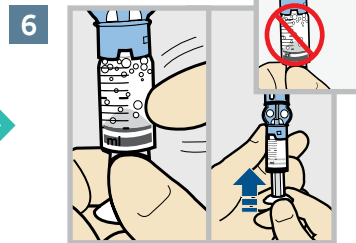
**3**  Wipe vial with alcohol. Place vial on table. Firmly press the blue transfer guard onto vial.

**4**  Push and hold plunger down.

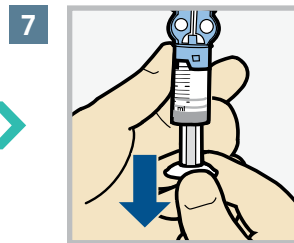
**WARNING:** If insulin or any liquid gets inside the tubing connector, it can temporarily block the vents that allow the pump to properly fill the infusion set. This may result in the delivery of too little or too much insulin, which could cause hyperglycemia or hypoglycemia.



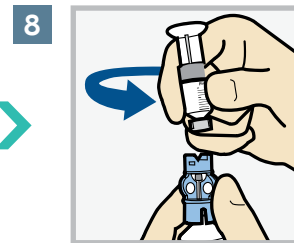
5 With your thumb still on the plunger, flip over so vial is on top. Release thumb and pull plunger down to fill with insulin.



6 Tap the reservoir to move air bubbles to top of reservoir. Push plunger up to move air into vial.



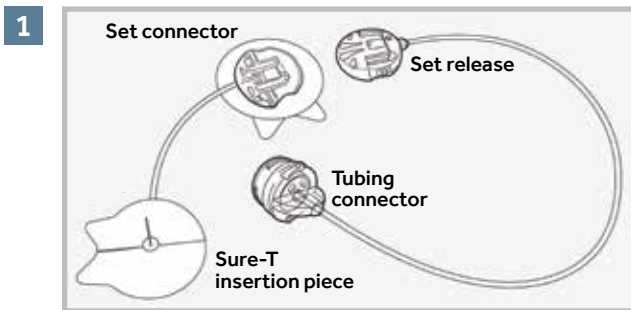
7 If needed, pull plunger back down to amount of insulin needed for 2-3 days.



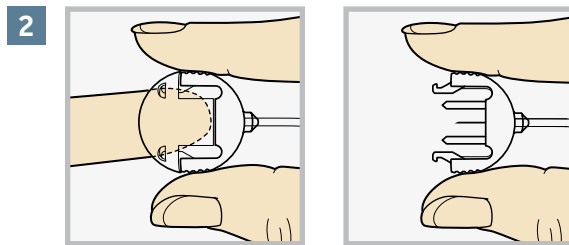
8 To avoid getting insulin on the top of the reservoir, turn vial over so it is upright. Hold transfer guard and turn reservoir counter-clockwise and remove from transfer guard.

## CONNECT RESERVOIR TO INFUSION SET

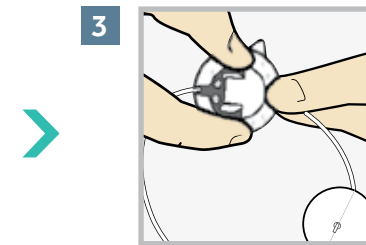
You will place the tubing connector onto the end of the infusion set to the filled reservoir.



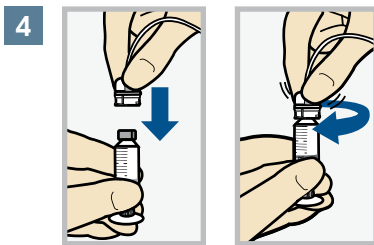
1 Remove the infusion set from package.



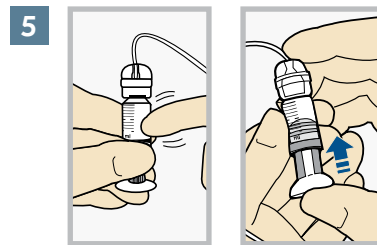
2 Press the edges of the set release connector. With the other hand, pull the cap off.



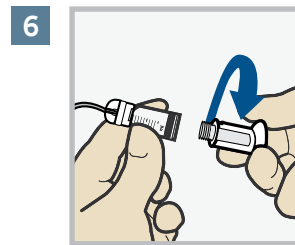
3 Slide the set release connector into the set connector.



4 Gently push the tubing connector onto reservoir. Turn clockwise until locked. You will hear a click.



5 If you see air bubbles, tap reservoir to move them to top. Push plunger just a bit to move them into tubing.

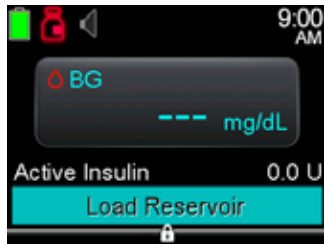


6 Twist plunger counter-clockwise to loosen and remove.



## THE BACKLIGHT MAY HAVE TURNED OFF

Press any button to turn the screen back on.



Press **O** to open the menu. If the pump is locked, you will need to unlock the pump after pressing **O**.



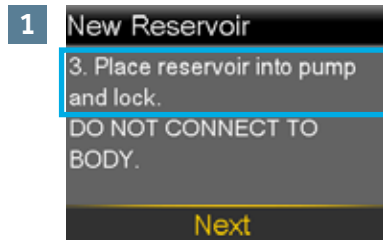
Select **Load Reservoir** from the menu.



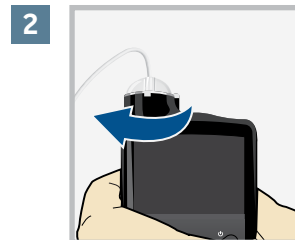
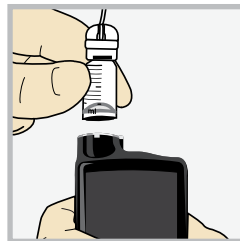
Select **Next**.

## PLACE RESERVOIR INTO PUMP

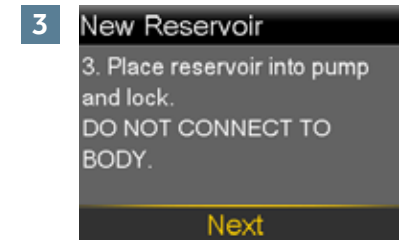
Now place the filled reservoir into the reservoir compartment of the pump.



Place reservoir into pump.



Turn clockwise until you feel reservoir lock into place.



Select **Next**.

## LOAD RESERVOIR AND FILL TUBING

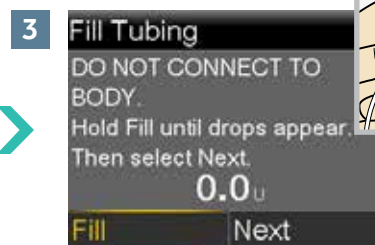
Follow these steps to load the reservoir and fill the tubing.



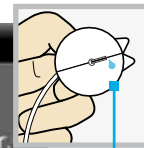
Select **Load** and keep holding **O**.



When you see this screen, select **Next**.



Select **Fill** and keep holding **O** until you see drops at the end of tubing, then let go.



Drops at end of tubing



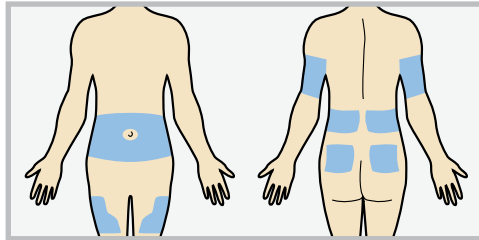
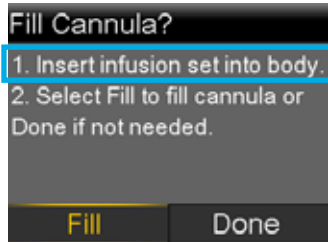
After you see drops, press **>** and select **Next**.

Continued on next page

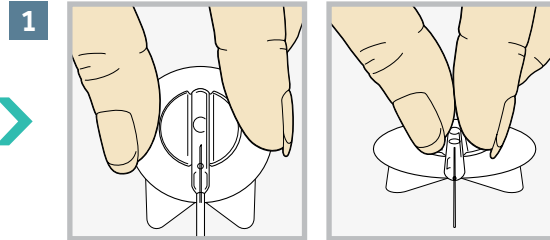


## INSERT INFUSION SET

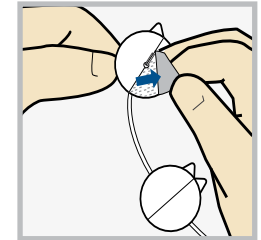
Next, follow the steps to insert the infusion set into your body.



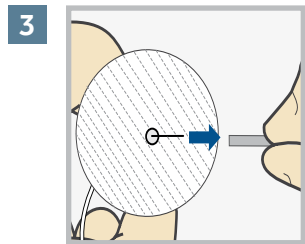
Choose an insertion site from the shaded areas shown here. Wipe with alcohol or other antiseptic.



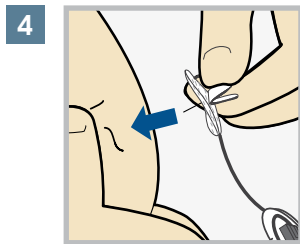
Hold infusion set insertion piece by flipping the plastic wings upwards and pressing them together.



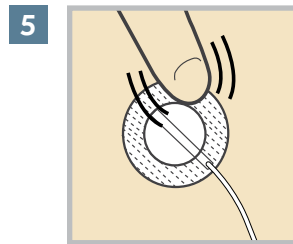
Peel off both pieces of the paper backing from the insertion piece.



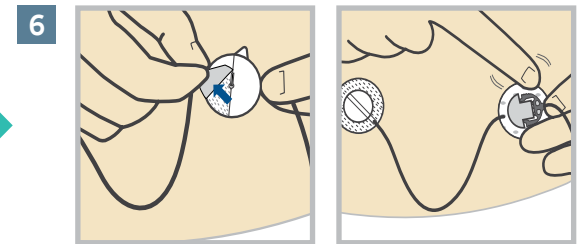
Pull off the needle guard.



With one hand, pinch up skin at prepared site. With the other hand, insert the needle straight in at a 90 degree angle.



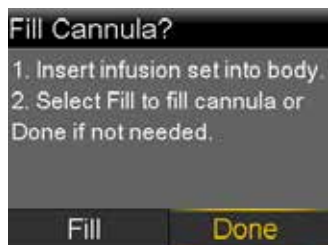
Press adhesive securely to skin.



Remove paper backing from the set connector and secure adhesive to skin. Be sure to place it on an area of your body that allows for easy disconnecting from tubing.

## COMPLETE THE INFUSION SET CHANGE

Use the pump to finish the process.



You do not need to fill a cannula. Press > and select **Done**.

**Your infusion set change is now complete!**